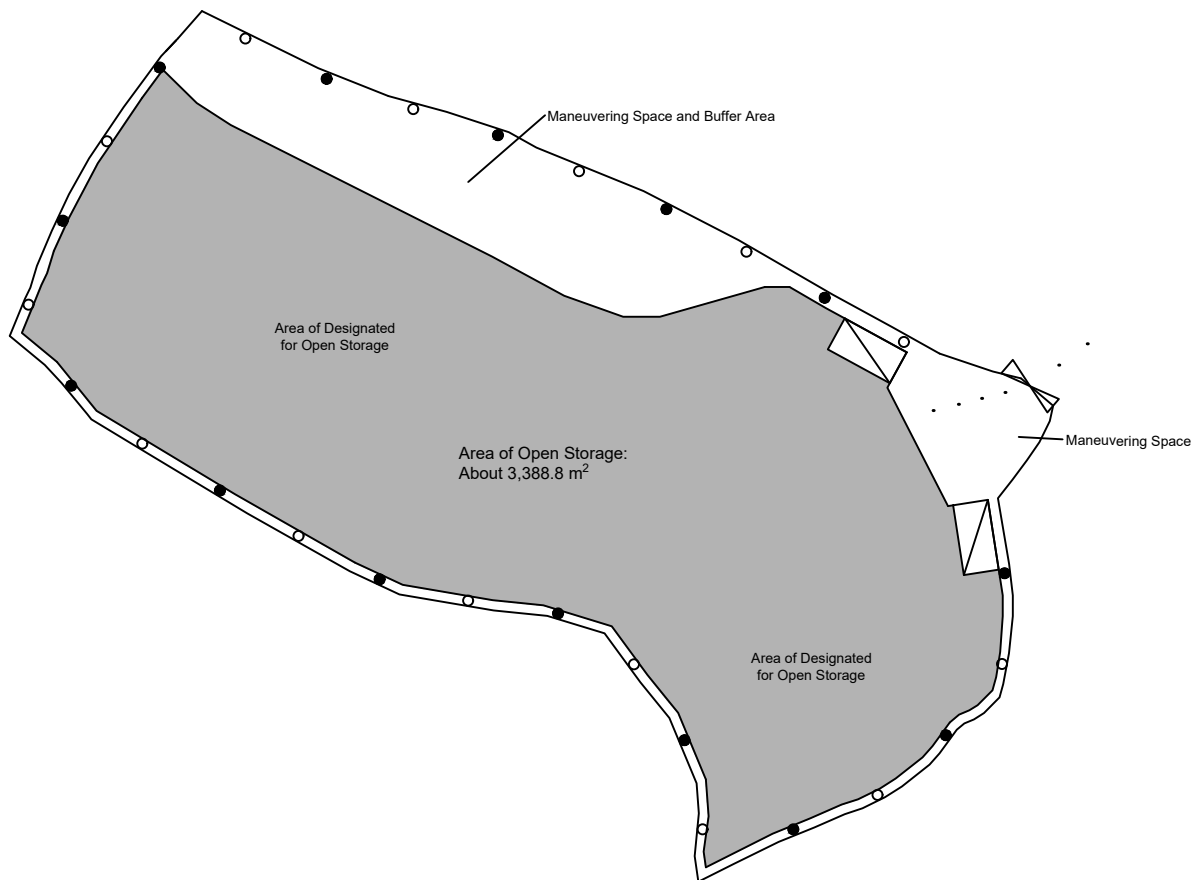


Light-Goods Vehicle Loading/Unloading Space

Dimension: 3.5m x 7m

Unit(s): 2



*All FSI (includes installation/maintenance/modification/repair work) will be completed by RFSIC.

For Emergency Vehicular Access, Please see Appendix 6.1

*All the enclosed structures are provided with access for emergency vehicles to reach within 30m travel distance from the structures.

Legend:

○ 4 kg Portable Dry Powder Type Fire Extinguisher (14 in Total)

● 9 kg Portable Water Type Fire Extinguisher (14 in Total)

... Emergency Vehicular Access

▭ LGV L/UL Space

Appendix 6

Location: DD 107 Lot 1288 (Part)
DD 107 Lot 1289 (Part)

OZP: S/YL-KTN/11
District: Kam Tin North
Zoning: Agriculture

Date: 28 May 2025

Proposed Fire Service Installation Plan

擬議消防設備安裝計劃圖

擬議臨時露天存放
及相關填土工程(為期3年)

Proposed Temporary Open Storage
and associated Filling of Land for a Period of 3 Years

SCALE

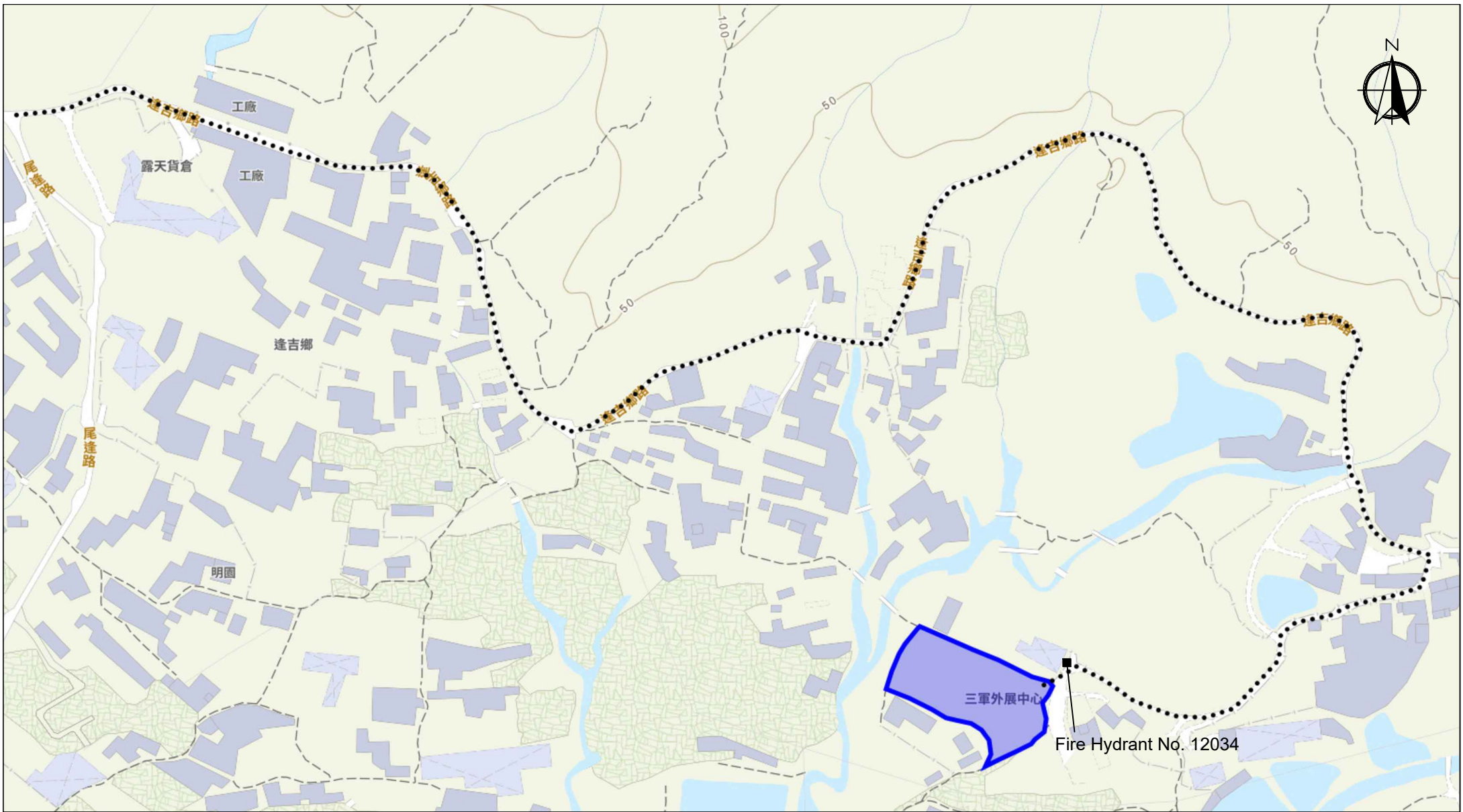
1:750

@A4

For Identification Only

Drawing No.:

6-01



Scale: Undefined @A4

Captured from map.gov.hk on 24th April 2025

<p>Appendix 6.1</p> <p>Emergency Vehicular Access and water supply location</p>	<p>Location: D.D. 107 Lot 1288 (Part), 1289 (Part)</p> <p>OZP: S/YL-KTN/11</p> <p>District: Kam Tin North</p> <p>Zoning: Agriculture</p>	<p>Project:</p> <p>Proposed Temporary Open Storage and associated Filling of Land for a Period of 3 Years</p>	<p>Width of Fung Kat Heung Road: 3-5m (About) with passing space</p> <p>Map Legend:</p> <ul style="list-style-type: none"> ●●●● Road Path — Site Boundary 	<p>Drawing No.: 6.1-1</p> <p>For Identification Only</p> <p>Date: 27/05/2025</p>
--	--	---	---	--